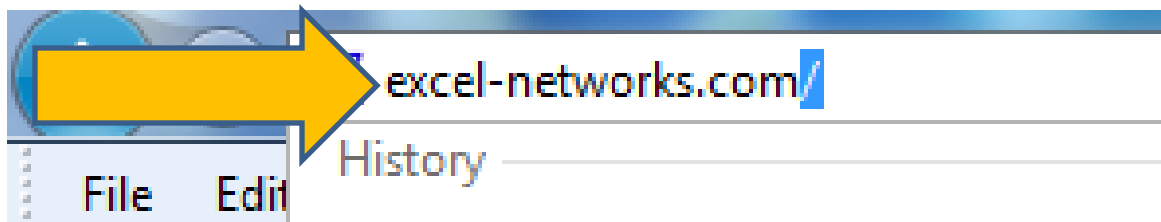


## Internet Explorer 9 - Exercise Download Procedures:

**Step 1** - Open Internet Explorer.



**Step 2** - Type the web address: Excel-Networks.com

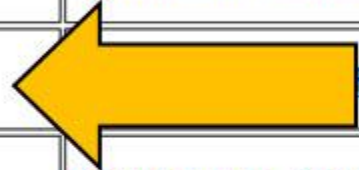


**Step 3** - Go to the home page and look for the link called "Exercises".

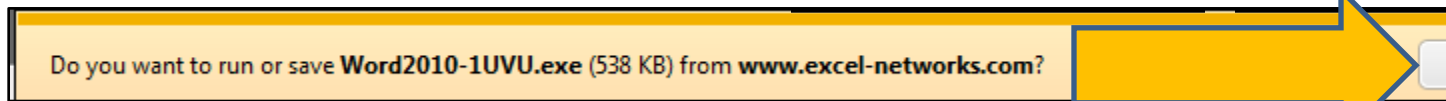


**Step 4** - Click in the "Excel 2010 Level 1 UVU" download file.

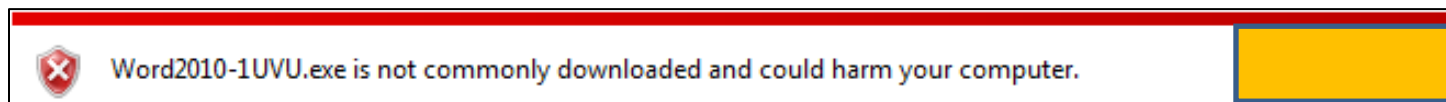
Class Name	Download This File	Optional Download
Word 2010 Level 1 UVU	<a href="#">Downloadable Executable</a>	<a href="#">Downloadable .ZIP File</a>
Word 2010 Level 2 UVU	<a href="#">Downloadable Executable</a>	<a href="#">Downloadable .ZIP File</a>
Excel 2010 Level 1 UVU	<a href="#">Downloadable Executable</a>	<a href="#">Downloadable .ZIP File</a>
Excel 2010 Level 2 UVU	<a href="#">Downloadable Executable</a>	<a href="#">Downloadable .ZIP File</a>
Access 2010 Level 1 UVU	<a href="#">Downloadable Executable</a>	<a href="#">Downloadable .ZIP File</a>
Outlook 2010 Level 1 UVU	<a href="#">Downloadable Executable</a>	<a href="#">Downloadable .ZIP File</a>
Acrobat X Level 1&2	<a href="#">Downloadable Executable</a>	<a href="#">Downloadable .ZIP File</a>
PowerPoint2010-1 UVU	<a href="#">Downloadable Executable</a>	<a href="#">Downloadable .ZIP File</a>



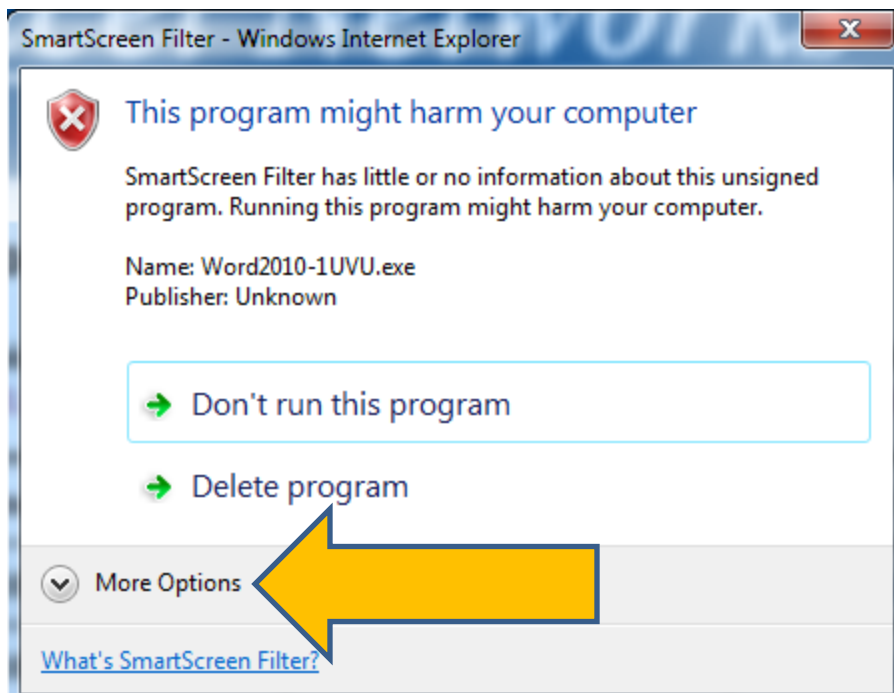
**Step 5** – Choose Run from the question on the bottom of the screen.



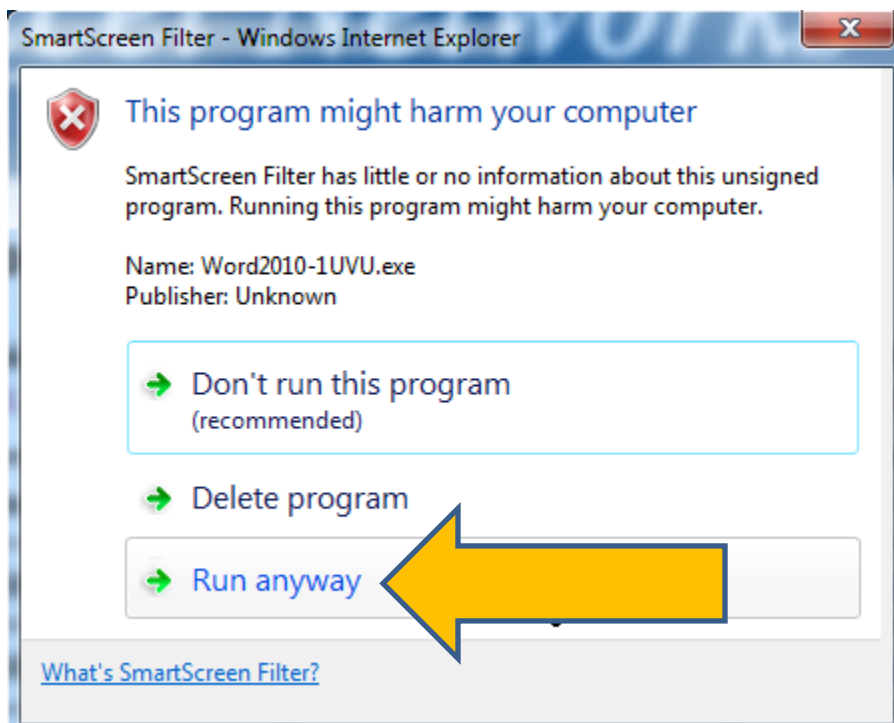
**Step 6** – Answer the security question by choosing Actions.



**Step 7** – Choose "More Options."

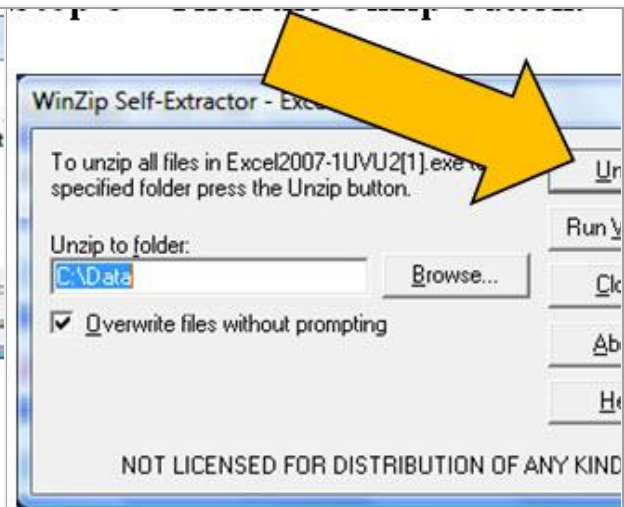


**Step 8** – Choose "Run Anyways."

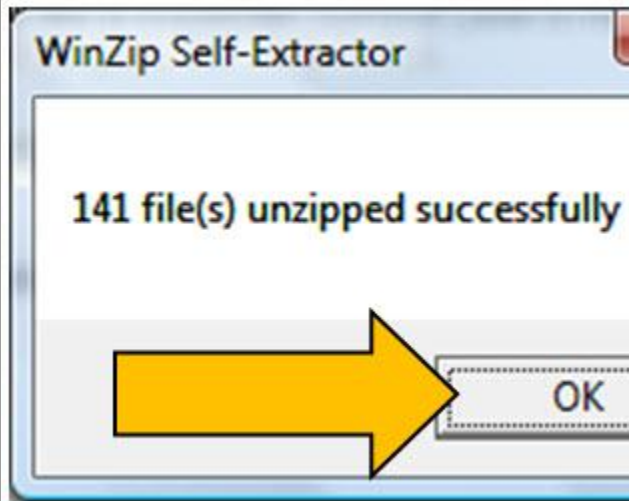


**Step 9** - Choose the **OK** button.

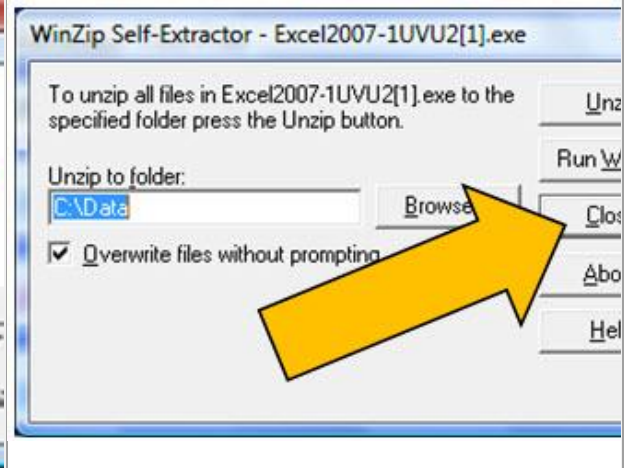
**Step 10** - Click the **Unzip** button.



**Step 11** - Choose the **OK** button.

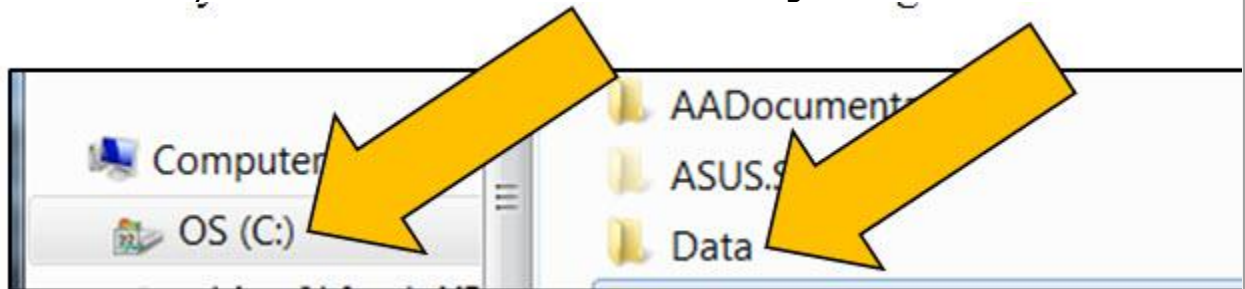


**Step 12** - Choose the **Close** button.



**Step 13** - The files are now located in the C:\Data folders on your computer.

Windows **Start** button (located in the lower left corner of computer)à **Computer** option to open **Windows Explorer**àClick on the **C:** drive on the left and you will see the **data** folder on the right



If there are any questions or problems, you can contact Jeff Hutchinson at

[JeffHutch@Excel-Networks.com](mailto:JeffHutch@Excel-Networks.com)